

# GARAGE SALE

TOP DOLLAR  
FOR YOUR  
TRADE

AT

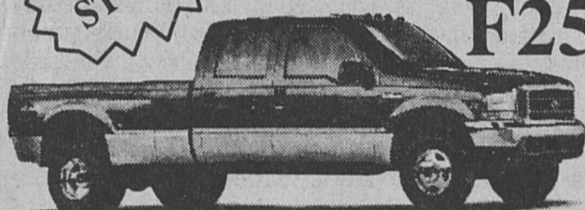
EVERYTHING  
MUST  
GO!

## COLUMBUS FORD MERCURY

**THE 2000'S  
ARE ARRIVING!**

**ALL '99'S  
MUST BE SOLD!**

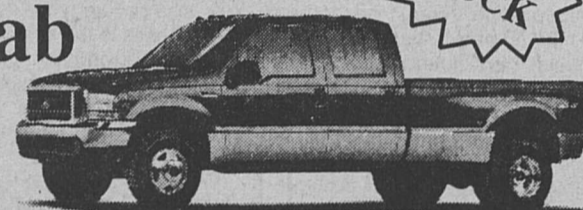
IN STOCK



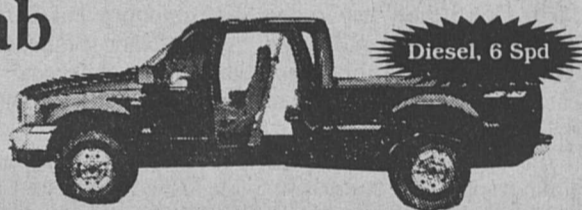
**2000  
F250 4x4 Crew Cab**  
V-10, Auto, Lariat  
Stock #2005

**2000  
F350 4x4 Crew Cab**  
Diesel, Lariat, 6-Speed  
Stock #2003

IN STOCK



**1999  
F350 Super Cab**  
Diesel, 6-Speed Stock #9070  
**\$24,625**



**1999  
Expedition Eddie Bauer**  
5.4L V-8, Trailer Tow, CD Stock #1325  
**\$32,425**

### PROGRAM VEHICLES

'99 SUBURBAN LS Loaded - CD <b>\$25,995</b>	'99 EXPLORER XLT Leather - CD <b>\$23,995</b>	'99 EXPEDITION XLT CD - Rear A/C - Loaded <b>\$27,988</b>	'99 WINDSTAR LX 4-DR Quadseat - Rear A/C - Loaded <b>\$20,988</b>
---	---	---	---

## SAVE THOUSANDS ON USED VEHICLES!

'95 BUICK REGAL was \$9,995 ..... NOW \$7,950	'94 MAZDA 626 leather, was \$8,988 ..... NOW \$6,995
'94 OLDS ACHIEVA V-6 was \$8,980 ..... NOW \$6,995	'94 CHEVY EXT. CAB SILVERADO was \$12,980 ..... NOW \$10,445
'94 CHRYSLER CONCORDE leather, was \$10,990 ..... NOW \$8,588	'97 EXPLORER XLT loaded, was \$18,800 ..... NOW \$17,995
'95 CROWN VICTORIA loaded, was \$11,588 ..... NOW \$9,550	'97 DODGE 1500 CLUB CAB SLT was \$15,995 ..... NOW \$14,550
'95 BUICK LE SABRE leather, was \$10,775 ..... NOW \$8,995	'99 CHEVY SILVERADO auto, was \$17,995 ..... NOW \$16,950
'96 FORD T-BIRD loaded, was \$11,595 ..... NOW \$10,588	'98 FORD F150 SUPER CAB XLT was \$18,910 ..... NOW \$17,550
'96 FORD TAURUS LX WAGON leather, was \$11,550 ..... NOW \$9,995	'97 TRACKER 4x4 auto, hard top, was \$10,490 ..... NOW \$9,500
'97 CHEVY MALIBU V-6, loaded, was \$13,990 ..... NOW \$11,990	'95 FORD WINDSTAR GL rear a/c, was \$11,900 ..... NOW \$10,990
'98 HONDA CIVIC 4-DR. EX sunroof, was \$15,900 ..... NOW \$13,989	

## COLUMBUS FORD-MERCURY

Columbus Ford  I-10 West Houston  
 OPEN M-F, 8:30-5:30 Saturday, 8:30-3:00 ← Katy ←

**281-342-6824 or 1-800-443-1492**

www.columbusford.com